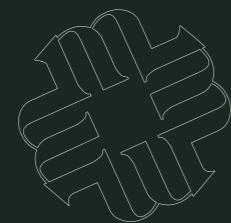


THE MEADOWS

JOHNSTONE, RENFREWSHIRE

TURNBERRY
HOMES
BE AT HOME



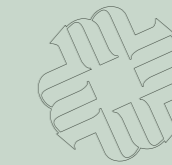


THE MEADOWS

Countryside Serenity, City Convenience

Discover an exceptional collection of 3 and 4-bedroom homes, thoughtfully designed to blend the tranquillity of the countryside with the convenience of modern living. Nestled in the heart of Johnstone, The Meadows is where scenic landscapes meet contemporary comfort, offering a lifestyle that balances relaxation and connectivity.





Embrace Nature's Playground

At The Meadows, you're not just purchasing a home; you're investing in a lifestyle enriched by nature. The expansive Clyde Muirshiel Regional Park, Scotland's largest regional park, is practically on your doorstep. Spanning over 108 square miles, it offers a myriad of activities, from tranquil woodland walks and invigorating hill climbs to sailing and kayaking on Castle Semple Loch. Whether you're an avid adventurer or someone who cherishes peaceful picnics amidst breathtaking landscapes, this natural haven caters to all.

A Community Rich in Amenities

Johnstone is a town that prides itself on its strong sense of community and the plethora of amenities it offers.

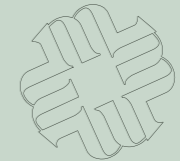
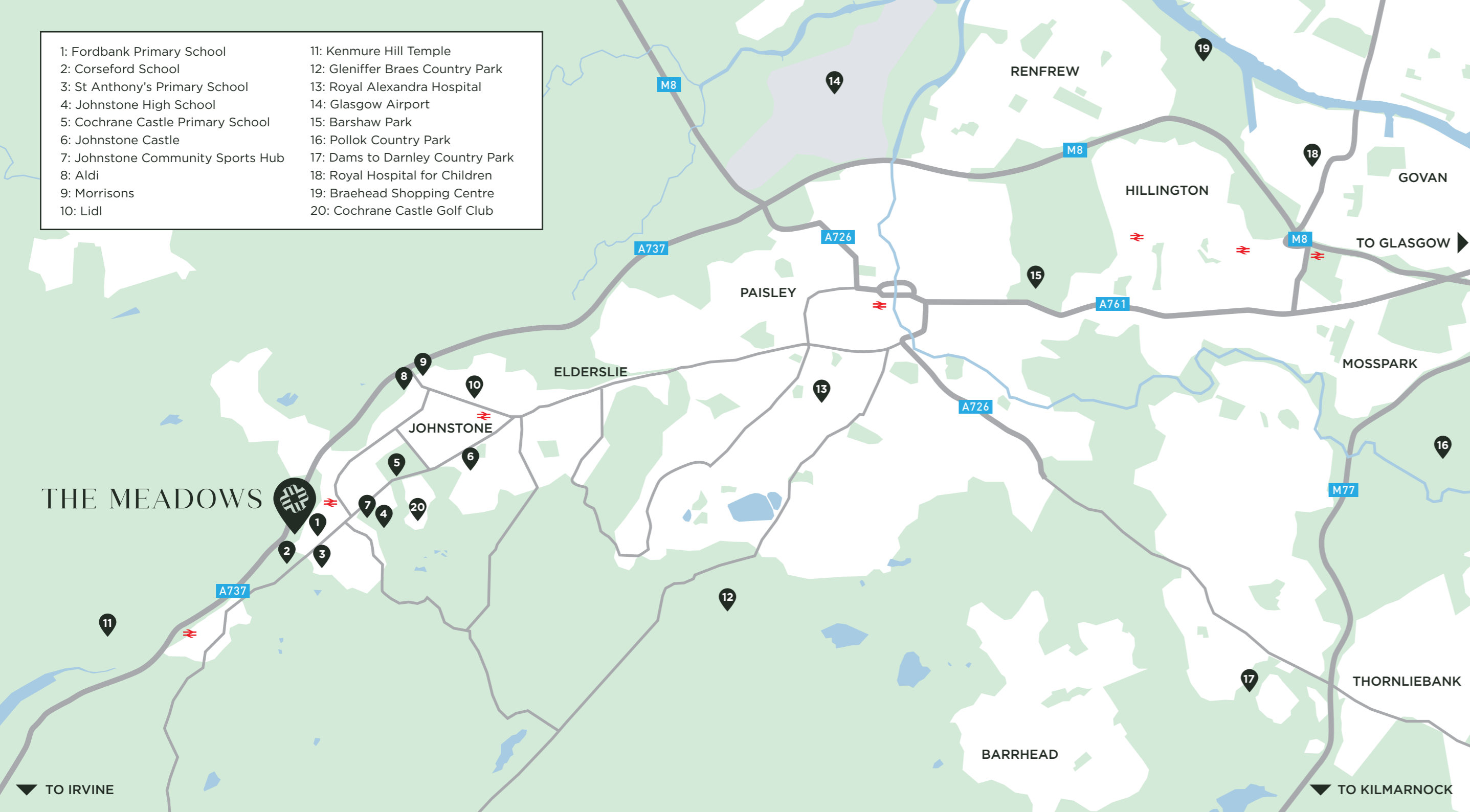
Families will appreciate the selection of reputable schools, including Thorn Primary School and Johnstone High School, both known for their commitment to academic excellence.

Daily conveniences are well catered for, with supermarkets, boutique shops, and essential services readily available.

For leisure and recreation, the Johnstone Community Sports Hub boasts a 25-meter swimming pool, modern fitness suites, and all-weather sports pitches, ensuring there's something for everyone.



- | | |
|-----------------------------------|----------------------------------|
| 1: Fordbank Primary School | 11: Kenmure Hill Temple |
| 2: Corseford School | 12: Gleniffer Braes Country Park |
| 3: St Anthony's Primary School | 13: Royal Alexandra Hospital |
| 4: Johnstone High School | 14: Glasgow Airport |
| 5: Cochrane Castle Primary School | 15: Barshaw Park |
| 6: Johnstone Castle | 16: Pollok Country Park |
| 7: Johnstone Community Sports Hub | 17: Dams to Darnley Country Park |
| 8: Aldi | 18: Royal Hospital for Children |
| 9: Morrisons | 19: Braehead Shopping Centre |
| 10: Lidl | 20: Cochrane Castle Golf Club |



Seamless Connectivity to Urban Excitement

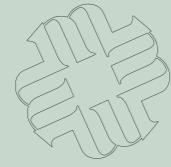
While The Meadows provides a retreat-like ambience, it doesn't compromise on connectivity. Milliken Park railway station is conveniently located nearby, offering direct services to Glasgow Central in approximately 20 minutes. For those who prefer driving, the A737 and M8 motorways ensure that the bustling city life, with its array of shopping, dining and cultural experiences, is within effortless reach.

Luxurious Living Spaces

Every home at The Meadows is meticulously designed to exude luxury and comfort. Spacious open-plan living areas are perfect for both entertaining guests and enjoying intimate family moments. High-specification kitchens adorned with premium finishes inspire culinary creativity. Generous gardens provide a private oasis for relaxation, play, or gardening pursuits. Energy-efficient designs ensure that your home is beautiful and sustainable, keeping you comfortable throughout the seasons.







Your Sanctuary Awaits

Choosing a home at The Meadows means embracing a lifestyle where the tranquillity of nature meets the vibrancy of urban living. It's a place where children can explore the great outdoors, professionals can enjoy swift commutes, and families can build lasting memories. Experience the perfect balance of serene countryside living and the conveniences of modern life. Welcome to The Meadows – where your dream home becomes a reality.



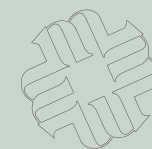


BE AT HOME. BE CARED FOR.

At Turnberry Homes, we don't just build houses – we craft homes with care and attention to detail. But our dedication doesn't stop there. When you choose us, you gain a partner committed to making your home ownership journey as smooth and enjoyable as possible.



Brora – 3 bedroom home



THE MEADOWS

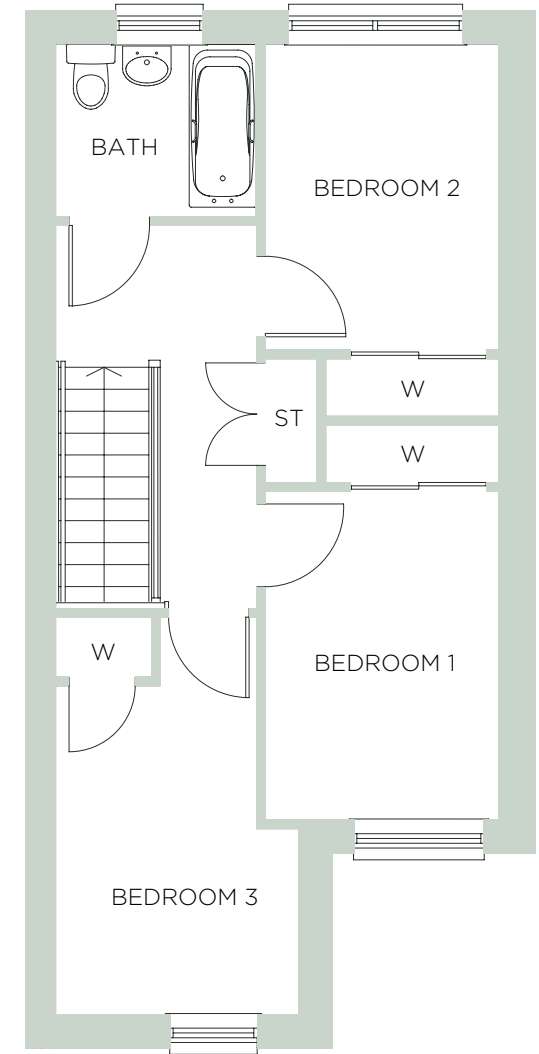
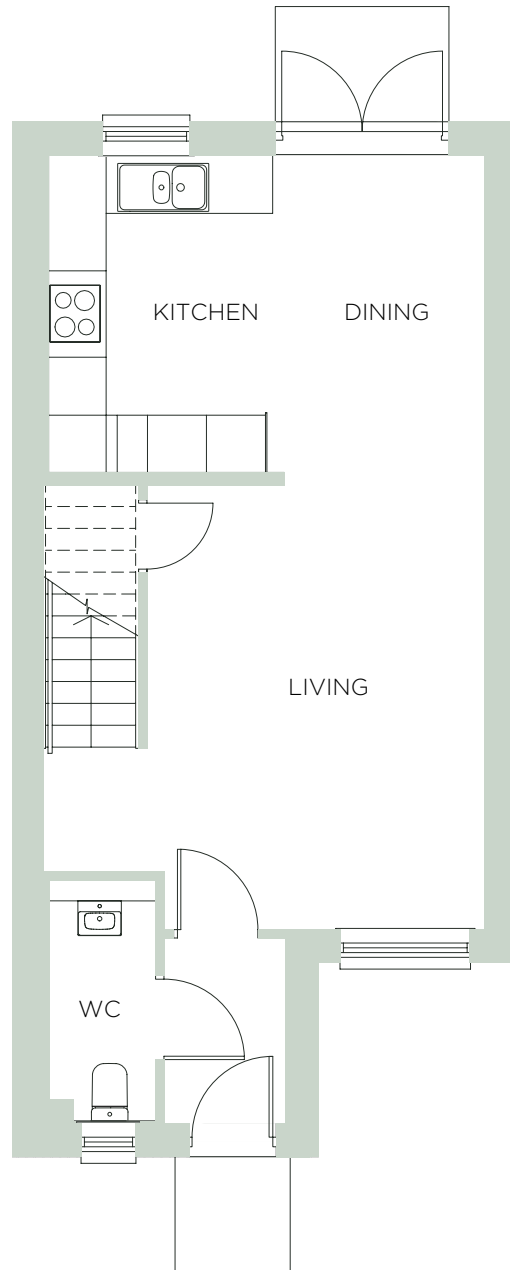
Brora

GROUND FLOOR

	Metric	Imperial
Kitchen/Dining	4550 x 3315	14'11" x 10'10"
Living (excluding stairs)	3525 x 4640	11'6" x 15'3"
WC	1110 x 2510	3'8" x 8'3"

FIRST FLOOR

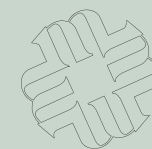
Bedroom 1	2425 x 3425	7'11" x 11'3"
Bedroom 2	2430 x 3190	8'0" x 10'6"
Bedroom 3	2535 x 3425	8'4" x 11'3"
Bathroom	2095 x 1800	6'10" x 5'11"
Total Area	84.38 sqm	908.26 sqft



Every care has been taken to ensure that the information given is accurate. However these particulars are outline, and are supplied only as guidance to prospective purchasers and do not form the whole or any part of any contract. Turnberry Homes Ltd reserve the right to alter or amend any particulars without notice. Plans and details are not to scale and all room sizes are approximate and may be subject to change.



Glencoul – 3 bedroom home



THE MEADOWS

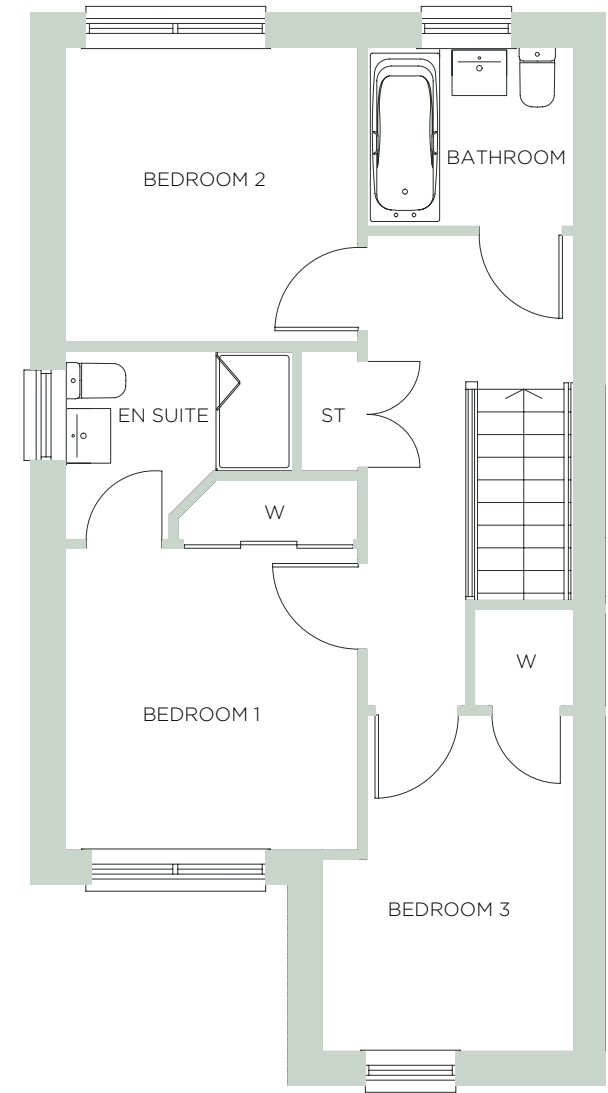
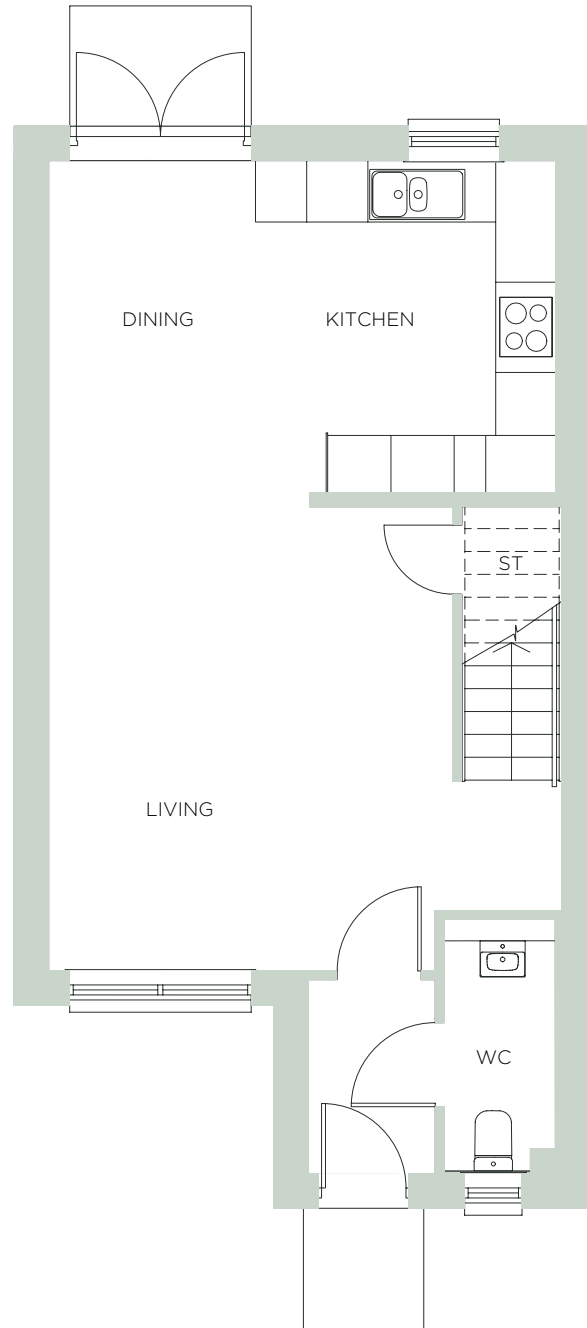
Glencoul

GROUND FLOOR

	Metric	Imperial
Kitchen/Dining	5060 x 3315	16'7" x 10'10"
Living (excluding stairs)	4035 x 4630	13'2" x 15'2"
WC	1110 x 2510	3'8" x 8'3"

FIRST FLOOR

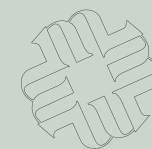
Bedroom 1	2950 x 3040	9'8" x 10'0"
En-suite	2290 x 1210	7'6" x 4'0"
Bedroom 2	2950 x 2965	9'8" x 9'9"
Bedroom 3	2535 x 3385	8'4" x 11'1"
Bathroom	2085 x 1800	6'10" x 5'11"
Total Area	92.62 sqm	996.96 sqft



Every care has been taken to ensure that the information given is accurate. However these particulars are outline, and are supplied only as guidance to prospective purchasers and do not form the whole or any part of any contract. Turnberry Homes Ltd reserve the right to alter or amend any particulars without notice. Plans and details are not to scale and all room sizes are approximate and may be subject to change.



Glendhu – 3 bedroom home



THE MEADOWS

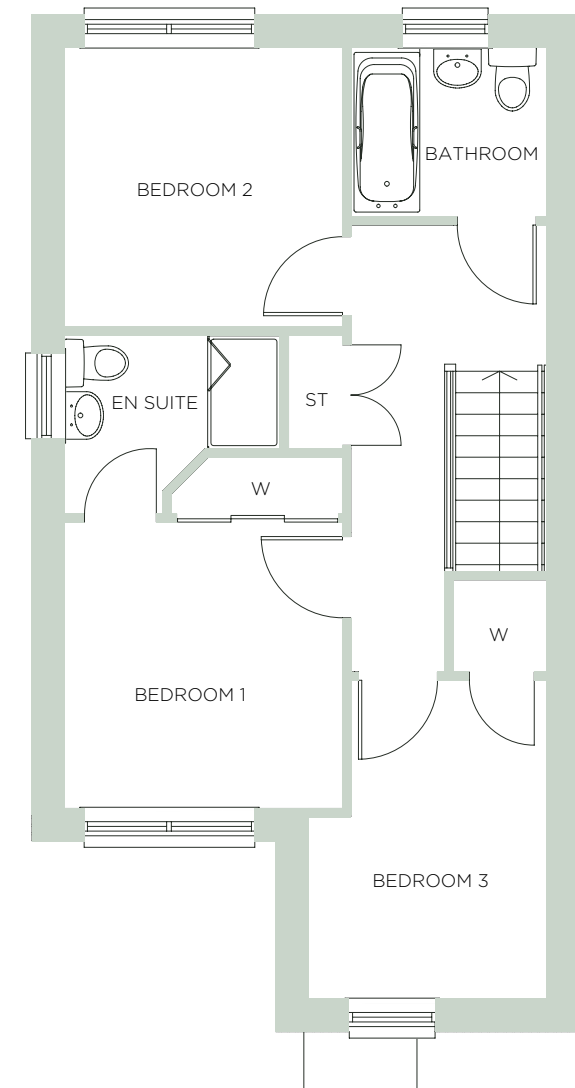
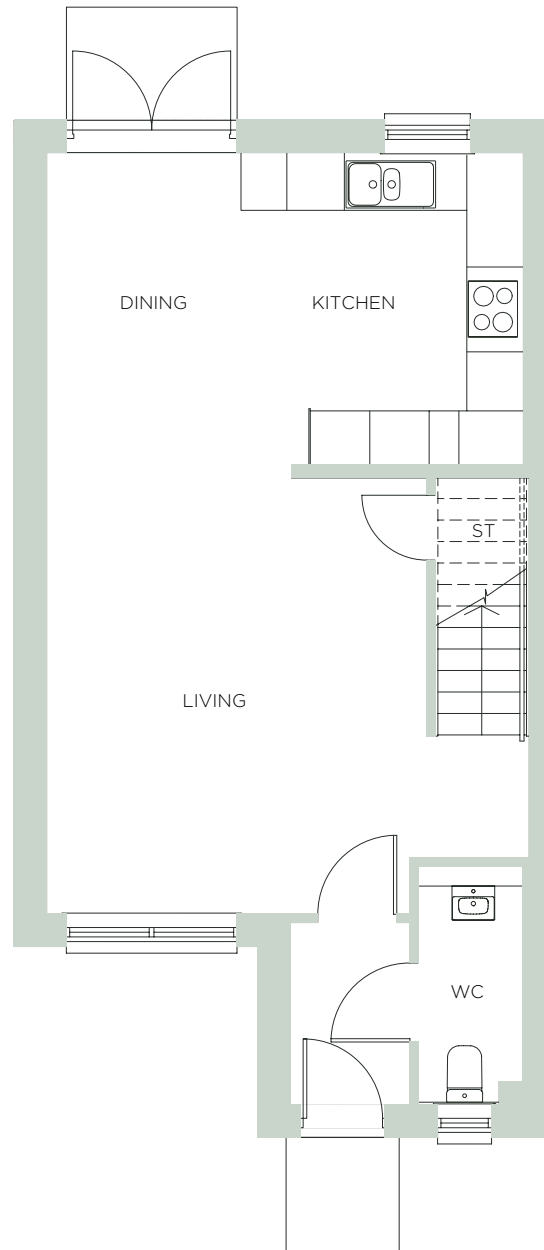
Glendhu

GROUND FLOOR

	Metric	Imperial
Kitchen/Dining	5060 x 3315	16'7" x 10'10"
Living (excluding stairs)	4035 x 4630	13'2" x 15'2"
WC	1110 x 2510	3'8" x 8'3"

FIRST FLOOR

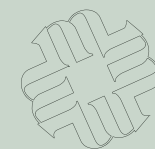
Bedroom 1	2950 x 3040	9'8" x 10'0"
En suite	2290 x 1210	7'6" x 4'0"
Bedroom 2	2950 x 2965	9'8" x 9'9"
Bedroom 3	2535 x 3385	8'4" x 11'1"
Bathroom	2080 x 1800	6'10" x 5'11"
Total Area	92.62 sqm	996.96 sqft



Every care has been taken to ensure that the information given is accurate. However these particulars are outline, and are supplied only as guidance to prospective purchasers and do not form the whole or any part of any contract. Turnberry Homes Ltd reserve the right to alter or amend any particulars without notice. Plans and details are not to scale and all room sizes are approximate and may be subject to change.



Katrine – 3 bedroom home



THE MEADOWS

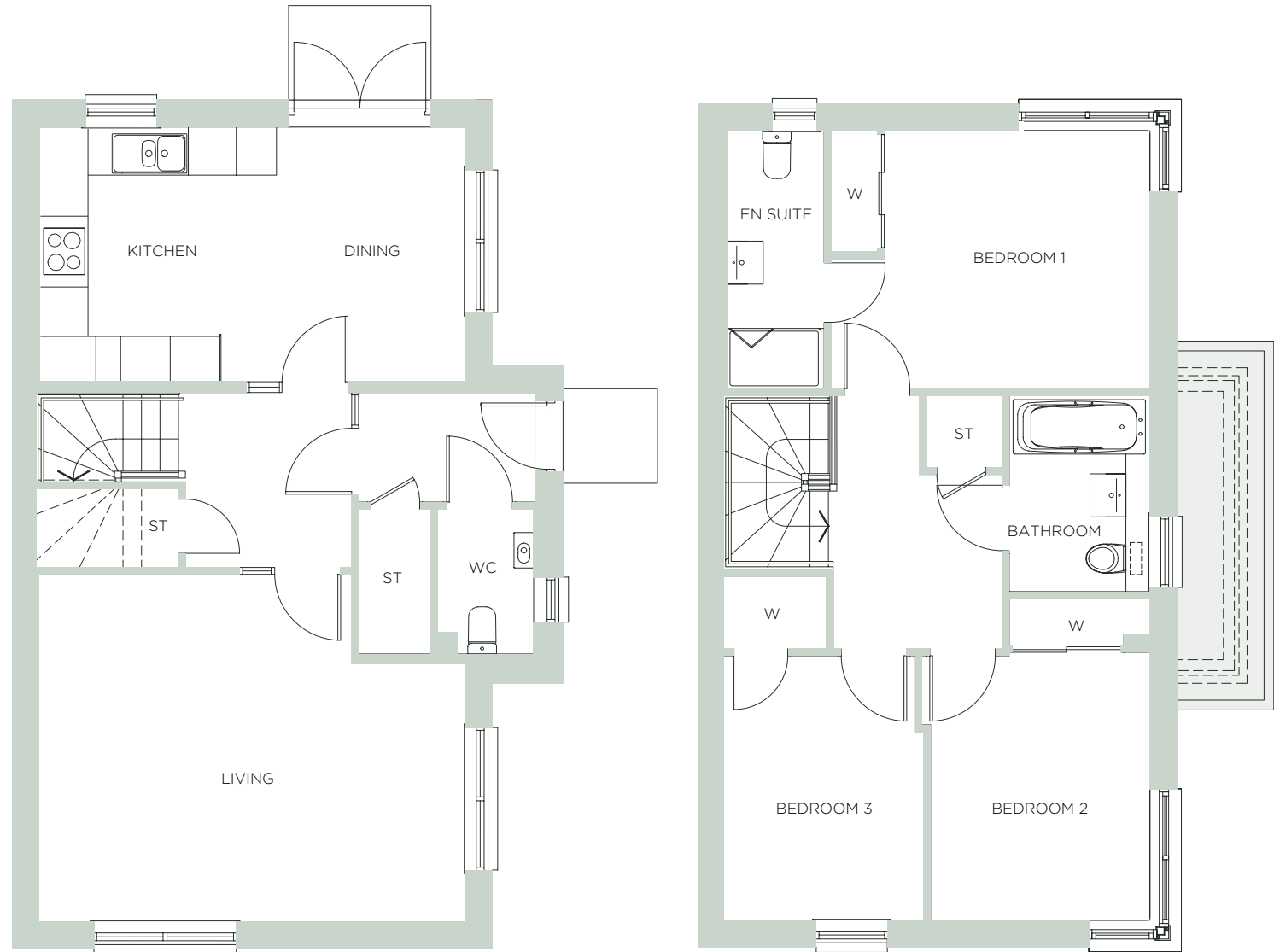
Katrine

GROUND FLOOR

	Metric	Imperial
Kitchen/Dining	5395 x 3240	17'8" x 10'8"
Living	5420 x 4420	17'9" x 14'6"
WC	1225 x 1845	4'0" x 6'1"

FIRST FLOOR

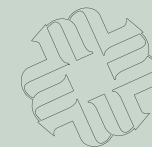
Bedroom 1	3400 x 3300	11'2" x 10'10"
En-suite	1240 x 3300	4'1" x 10'10"
Bedroom 2	2805 x 3430	9'3" x 11'3"
Bedroom 3	2565 x 3385	8'5" x 11'1"
Bathroom	1800 x 2515	5'11" x 8'3"
Total Area	112.76 sqm	1213.72 sqft



Every care has been taken to ensure that the information given is accurate. However these particulars are outline, and are supplied only as guidance to prospective purchasers and do not form the whole or any part of any contract. Turnberry Homes Ltd reserve the right to alter or amend any particulars without notice. Plans and details are not to scale and all room sizes are approximate and may be subject to change.



Islay – 4 bedroom home



THE MEADOWS

Islay

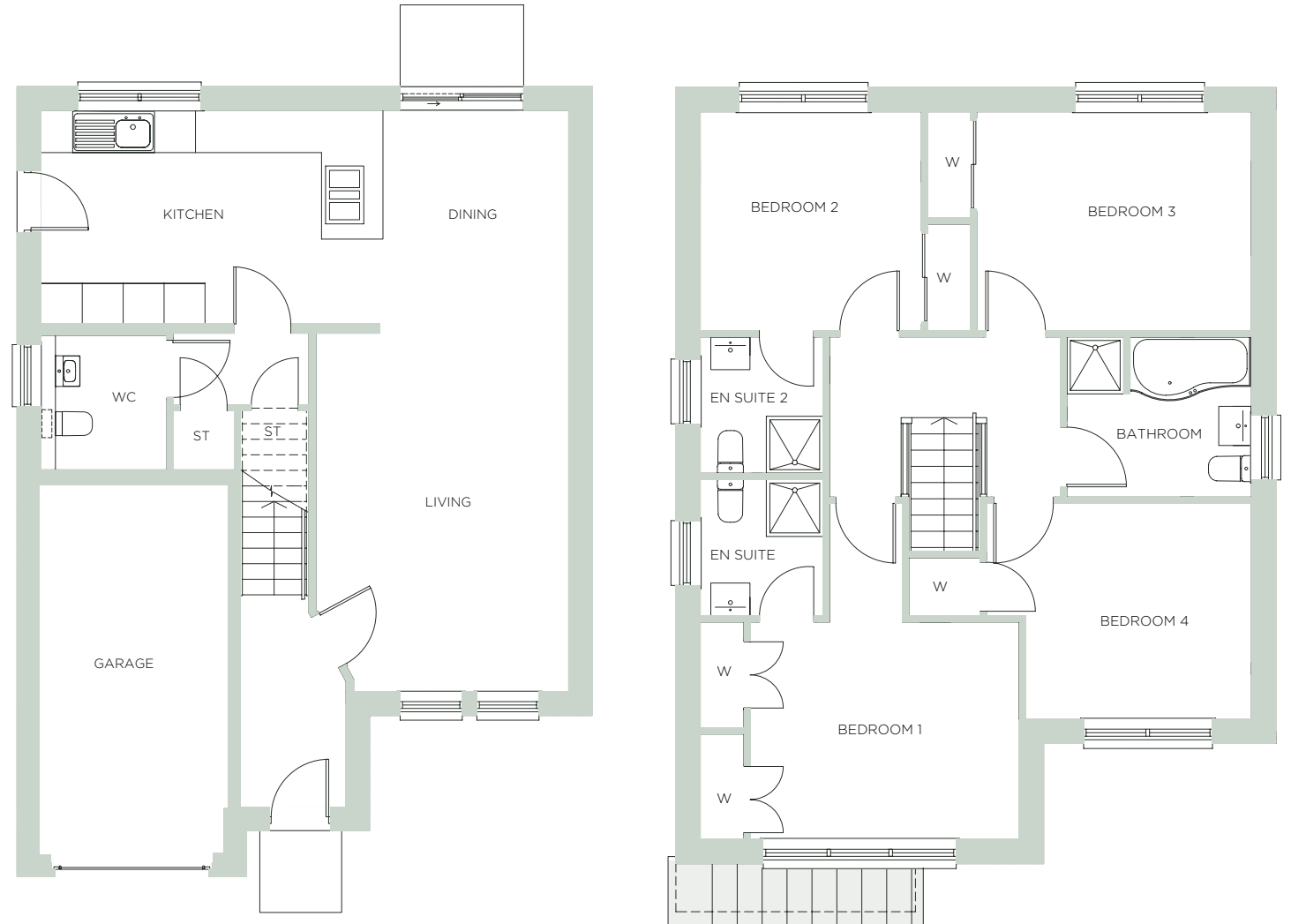
GROUND FLOOR

	Metric	Imperial
Living	3700 x 5260	12'2" x 17'3"
Kitchen	4840 x 3135	15'10" x 10'3"
Dining	2905 x 3135	9'6" x 10'3"
WC	1855 x 1970	6'1" x 6'6"
Garage	2780 x 5425	9'1" x 17'10"

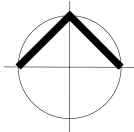
FIRST FLOOR

Bedroom 1	3780 x 3050	12'5" x 10'0"
En-suite 1	1730 x 1915	5'8" x 6'3"
Bedroom 2	3105 x 3075	10'2" x 10'1"
En-suite 2	1730 x 1915	5'8" x 6'3"
Bedroom 3	3860 x 3075	12'8" x 10'1"
Bedroom 4	3175 x 3030	10'5" x 9'11"
Bathroom	2595 x 2250	8'6" x 7'5"
Total Area	132.75 sqm	1428.9 sqft

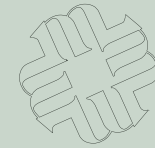
*Plots 1 & 2 have French doors from Dining to garden



Every care has been taken to ensure that the information given is accurate. However these particulars are outline, and are supplied only as guidance to prospective purchasers and do not form the whole or any part of any contract. Turnberry Homes Ltd reserve the right to alter or amend any particulars without notice. Plans and details are not to scale and all room sizes are approximate and may be subject to change.



NORTH



THE MEADOWS

Site Plan



-  THE BRORA
3 bedroom mid-terrace
-  THE GLENDHU
3 bedroom semi-detached / end-terrace
-  THE GLENCOUL
3 bedroom semi-detached
-  THE KATRINE
3 bedroom semi-detached
-  THE ISLAY
4 bedroom detached

Every care has been taken to ensure that the information given is accurate. However these particulars are outline, and are supplied only as guidance to prospective purchasers and do not form the whole or any part of any contract. Turnberry Homes Ltd reserve the right to alter or amend any particulars without notice. Plans and details are not to scale and are approximate and may be subject to change. Features such as landscaping may vary. We endeavour to ensure that no misleading information is given to prospective purchasers and comply with the Property Misdescriptions Act 1991. It is advised that our sales staff be consulted for current information relating to any of our developments.

Turnberry Homes

18 Allardyce Drive Glasgow G15 6RY

T. 0141 944 6544

E. salesoffice@turnberryhomes.co.uk

W. www.turnberryhomes.co.uk



Every care has been taken to ensure that the information given is accurate. However these particulars are outline, and are supplied only as guidance to prospective purchasers and do not form the whole or any part of any contract. Turnberry Homes Ltd reserve the right to alter or amend any particulars without notice. Plans and details are not to scale and all room sizes are approximate and may be subject to change. Features such as windows, French doors, elevational treatments, internal specifications and landscaping may vary. We endeavour to ensure that no misleading information is given to prospective purchasers and comply with the Property Misdescriptions Act 1991. All of our showhomes are decorated, furnished and presented to showcase a potential lifestyle. Some items of equipment, furniture, fixtures and fittings (inside and out) are not included in our standard specification. It is advised that our sales staff be consulted for current information relating to any of our developments.