



CASTLE POINT FLOOR PLAN

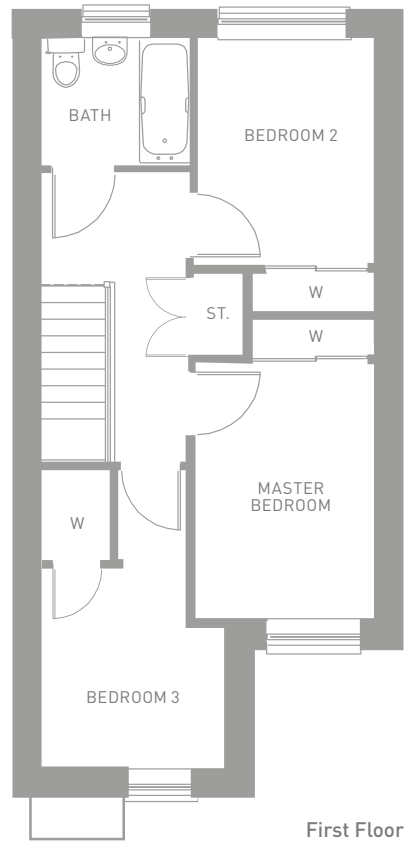
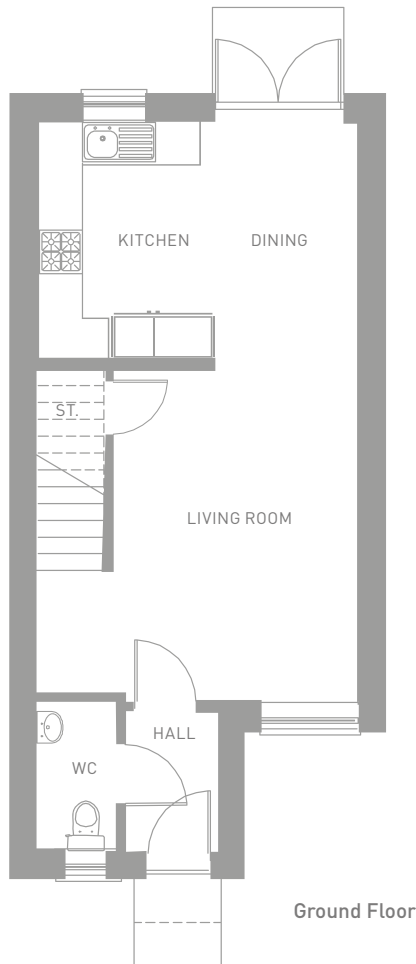
BRORA



BRORA

3 bedroom terraced home

A spacious 3 bedroom terraced home with open plan layout downstairs for social living and generous upper landing leading to 3 large bedrooms with fitted wardrobes.



Dimensions

Ground Floor

	Imperial	Metric
Living Room	11'8" x 15'1"	3558 x 4618mm
Kitchen/Dining	15'0" x 10'9"	4574 x 3294mm
WC	3'7" x 6'9"	1101 x 2061mm

First Floor

Master Bedroom	8'1" x 11'7"	2476 x 3545mm
Bedroom 2	8'1" x 10'4"	2476 x 3167mm

Bedroom 3	8'2" x 11'1"	2511 x 3403mm
Bathroom	6'8" x 5'10"	2048 x 1780mm

Overall 904 sqft 84.03 sqm

Sizes exclude wardrobe area.