



CASTLE POINT FLOOR PLAN

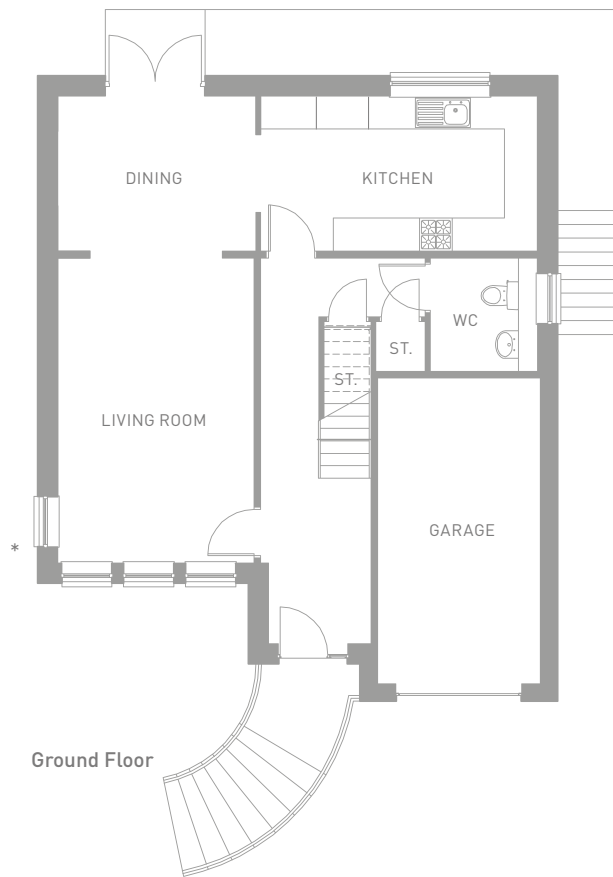
LOMOND



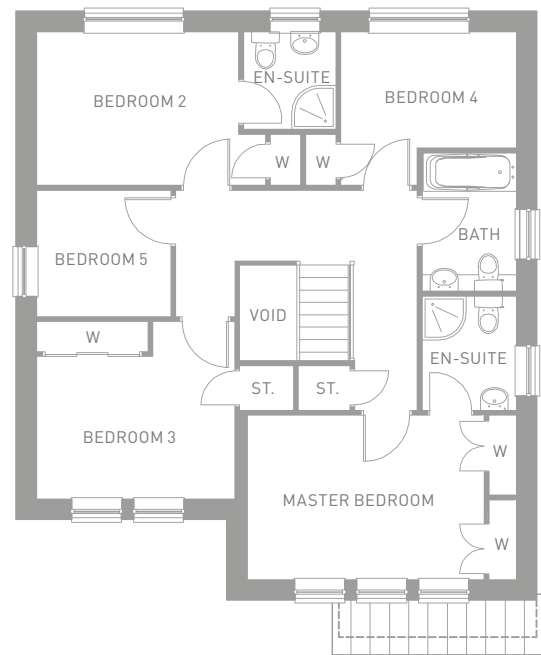
LOMOND

5 bedroom detached home with 2 en-suites

Generously sized family home with open plan kitchen/dining area, large living space and 5 spacious bedrooms, 2 with en-suites. The gallery landing and front entrance steps are attractive features to this elegant home.



Ground Floor



First Floor

Dimensions Ground Floor

	Imperial	Metric
Living Room	11'8" x 18'2"	3561 x 5542mm
Kitchen	16'5" x 9'2"	5025 x 2809mm
Dining	11'9" x 9'2"	3597 x 2809mm
WC	5'10" x 6'8"	1780 x 2056mm
Garage	18'2" x 9'8"	5540 x 2950mm

First Floor

Master Bedroom	13'11" x 9'9"	4247 x 2985mm
En-Suite	5'7" x 6'9"	1710 x 2075mm

Bedroom 2	12'0" x 9'1"	3670 x 2789mm
En-Suite	5'5" x 5'9"	1675 x 1775mm
Bedroom 3	11'9" x 10'6"	3597 x 3225mm
Bedroom 4	10'5" x 9'1"	3189 x 2789mm
Bedroom 5	8'0" x 7'6"	2441 x 2295mm
Bathroom	5'7" x 8'2"	1710 x 2511mm

Sizes exclude wardrobe and garage areas.

* Side window, plot specific.