



CASTLE POINT FLOOR PLAN

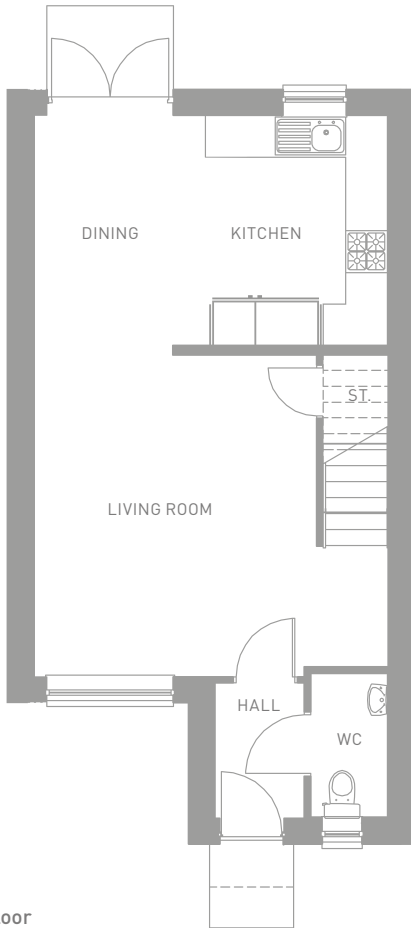
GLENDHU
SEMI-DETACHED & TERRACED



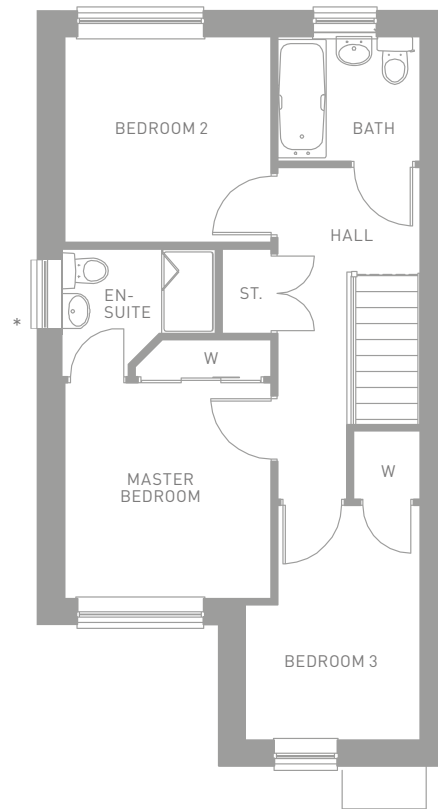
GLENDHU

3 bedroom semi-detached & terraced home with en-suite

A luxury 3 bedroom semi-detached or terraced home with a great layout both downstairs and upstairs. The ideal choice for a couple or growing family.



Ground Floor



First Floor

Dimensions

Ground Floor

	Imperial	Metric
Living Room	13'3" x 15'1"	4045 x 4608mm
Kitchen/Dining	16'7" x 10'9"	5061 x 3294mm
WC	3'7" x 6'9"	1100 x 2061mm

First Floor

Master Bedroom	9'8" x 10'1"	2962 x 3086mm
En-Suite	7'5" x 3'11"	2267 x 1210mm
Bedroom 2	9'8" x 9'7"	2962 x 2945mm

Bedroom 3	8'2" x 11'0"	2511 x 3362mm
Bathroom	6'8" x 5'10"	2048 x 1780mm

Overall **989 sqft** **91.86 sqm**

Sizes exclude wardrobe area.

*No window and different en-suite formation in mid-terraced homes. Ask Sales Advisor.