



CASTLE POINT FLOOR PLAN

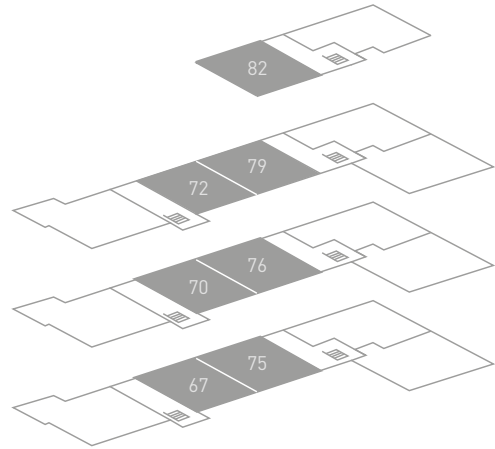
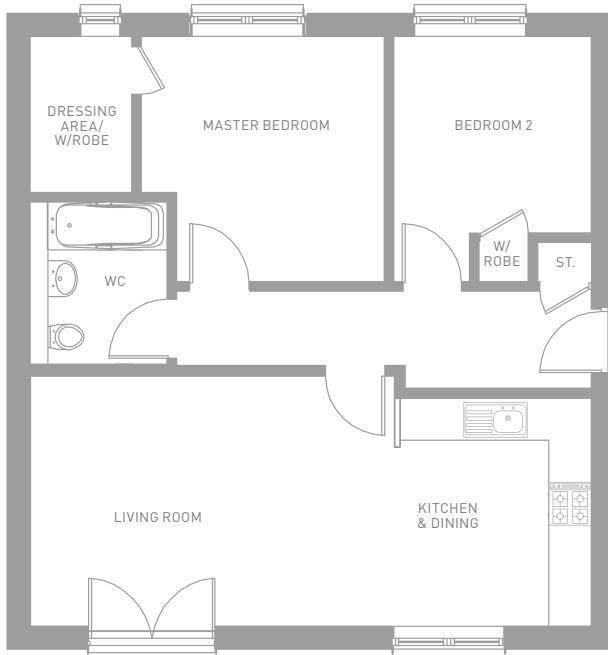
NEWTOWN APARTMENT BLOCK



TYPE A

2 bedroom apartment

2 bedroom apartment with open plan living. Spacious apartment with 2 bedrooms, bathroom and plenty of storage throughout and attractive hallway.



Dimensions

Living Room/Kitchen
Master Bedroom
Dressing Area/Wardrobe
Bedroom 2
Bathroom

Imperial

26'0" x 11'7"
11'4" x 11'5"
4'10" x 7'3"
9'4" x 11'5"
6'6" x 7'7"

Metric

7936mm x 3539mm
3465mm x 3487mm
1487mm x 2210mm
2851mm x 3487mm
1986mm x 2323mm

Overall

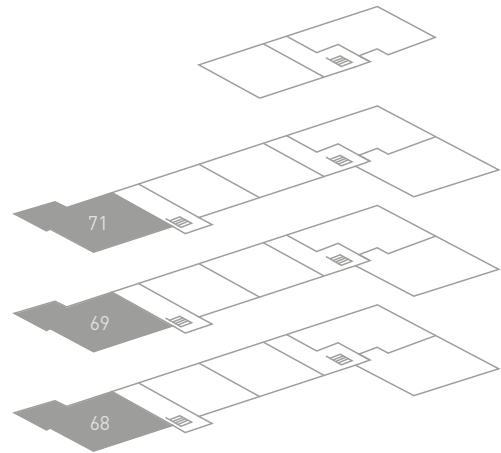
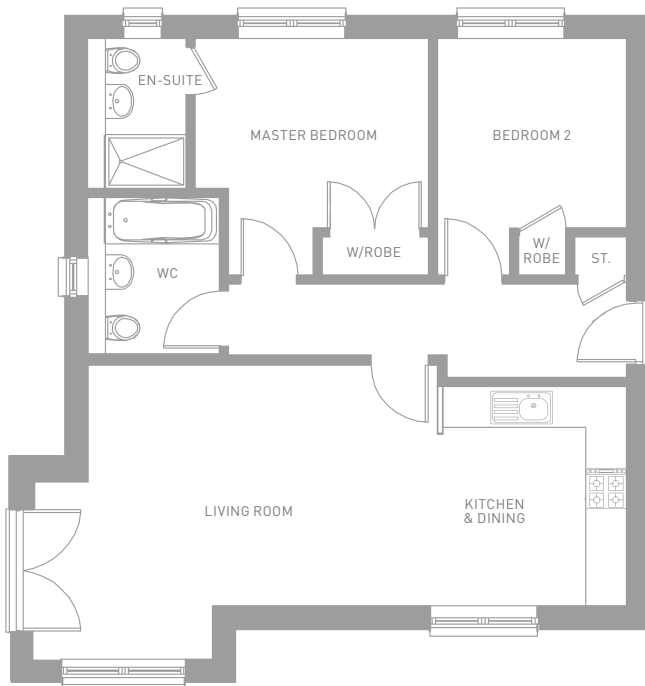
713 sqft

66.26 sqm

TYPE B

2 bedroom apartment with en-suite

2 bedroom apartment with open plan living and en-suite. Luxury apartment in external corner position with large living/kitchen area, Paris balcony, 2 sizeable bedrooms with storage and private en-suite.



Dimensions

Living Room/Kitchen
Master Bedroom
En-suite
Bedroom 2
Bathroom

Imperial

28'6" x 14'1"
11'3" x 11'4"
4'9" x 7'2"
9'2" x 11'4"
6'4" x 7'7"

Metric

8707mm x 4316mm
3438mm x 3477mm
1450mm x 2200mm
2813mm x 3477mm
1944mm x 2313mm

Overall

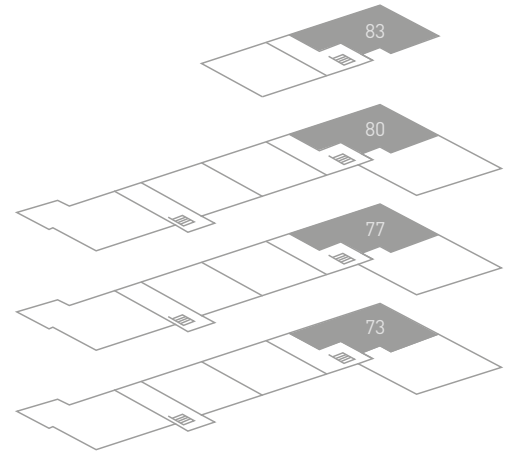
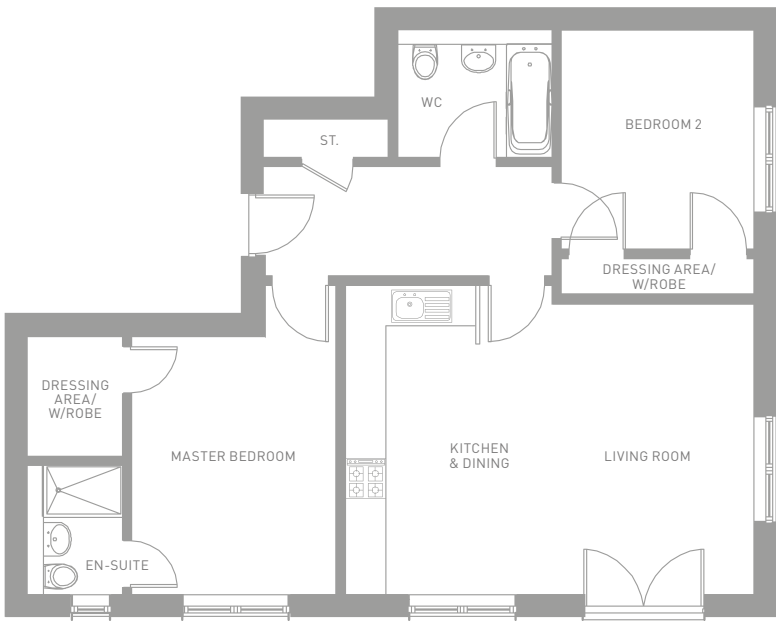
742 sqft

68.97 sqm

TYPE C

2 bedroom apartment with en-suite

2 bedroom apartment with open plan living and en-suite. Luxury apartment with large living/kitchen area, Paris balcony, 2 sizeable bedrooms with built-in wardrobe space and private en-suite.



Dimensions

Living Room/Kitchen
Master Bedroom
Dressing Area/Wardrobe
En-suite
Bedroom 2
Bathroom

Imperial

19'11" x 15'1"
10'2" x 15'1"
4'9" x 5'9"
4'9" x 6'4"
9'4" x 10'8"
7'7" x 6'4"

Metric

6079mm x 4601mm
3099mm x 4601mm
1450mm x 1777mm
1450mm x 1952mm
2861mm x 3257mm
2319mm x 1944mm

Overall

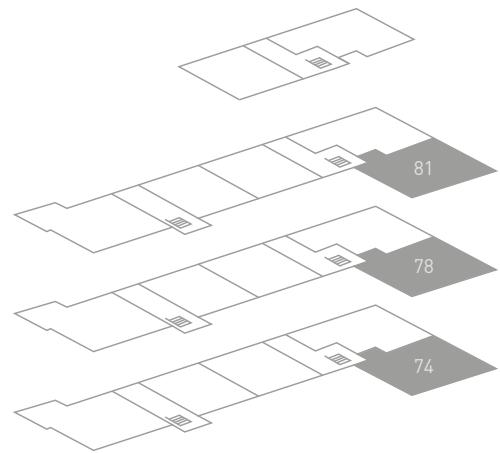
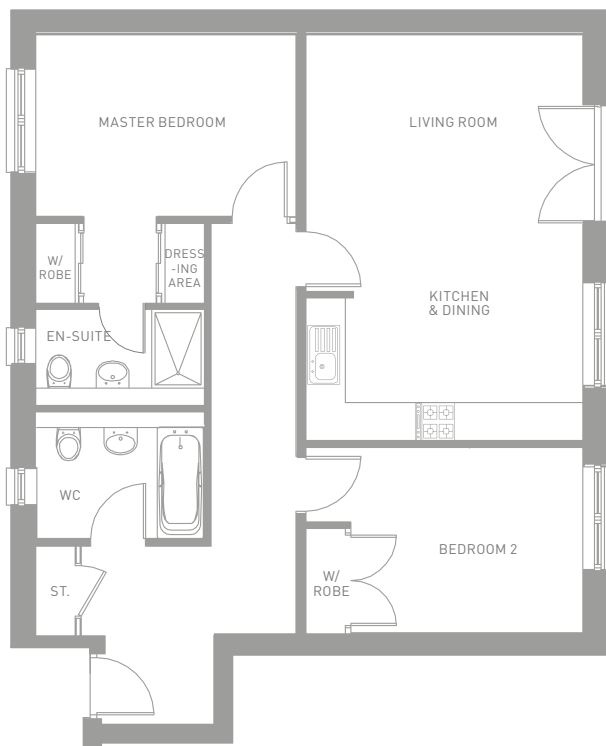
773 sqft

71.83 sqm

TYPE D

2 bedroom apartment with en-suite

2 bedroom apartment with open plan living and en-suite. Luxury apartment with large living/kitchen area, Paris balcony, 2 large bedrooms with built-in wardrobe space and private en-suite.



Dimensions

Living Room/Kitchen
Master Bedroom
Dressing Area/Wardrobe
En-suite
Bedroom 2
Bathroom

Imperial

13'10" x 20'4"
12'11" x 9'1"
8'5" x 3'11"
8'5" x 4'8"
13'10" x 9'2"
8'3" x 6'4"

Metric

4228mm x 6208mm
3961mm x 2774mm
2571mm x 1210mm
2571mm x 1432mm
4227mm x 2799mm
2535mm x 1944mm

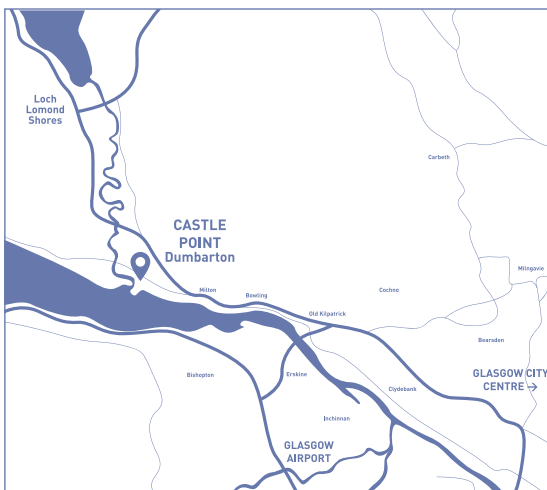
Overall

845 sqft

78.54 sqm

CASTLE POINT LOCATION

Castle Point
Castle Road, Dumbarton
G82 1JF
Call **0141 944 6544**



Turnberry Homes
18 Allerdyce Drive
Great Western Business Park
Glasgow G15 6RY
Tel. 0141 944 6544
Email. salesoffice@turnberryhomes.co.uk
turnberryhomes.co.uk

Photography is illustrative only and of a typical Turnberry Homes interior.

Every care has been taken to ensure that the information given is accurate. However these particulars are outline, and are supplied only as guidance to prospective purchasers and do not form the whole or any part of any contract. Turnberry Homes Ltd reserve the right to alter or amend any particulars without notice. Plans and details are not to scale and all room sizes are approximate and may be subject to change. Features such as windows, French doors, elevational treatments, internal specifications and landscaping may vary. We endeavour to ensure that no misleading information is given to prospective purchasers and comply with the Property Misdescriptions Act 1991. All of our showhomes are decorated, furnished and presented to showcase a potential lifestyle. Some items of equipment, furniture, fixtures and fittings (inside and out) are not included in our standard specification. It is advised that our sales staff be consulted for current information relating to any of our developments.